

TH

13,200 lbs / 63 ft **6.20**

- Available with 100kW **Deutz Stage V** engines
- Standard pivoting stabilisers for optimised lifting capacities up to 13,200 lbs
- **350 bar L/S** hydraulic system
- **4WD**



MAIN SECTORS



INDUSTRY

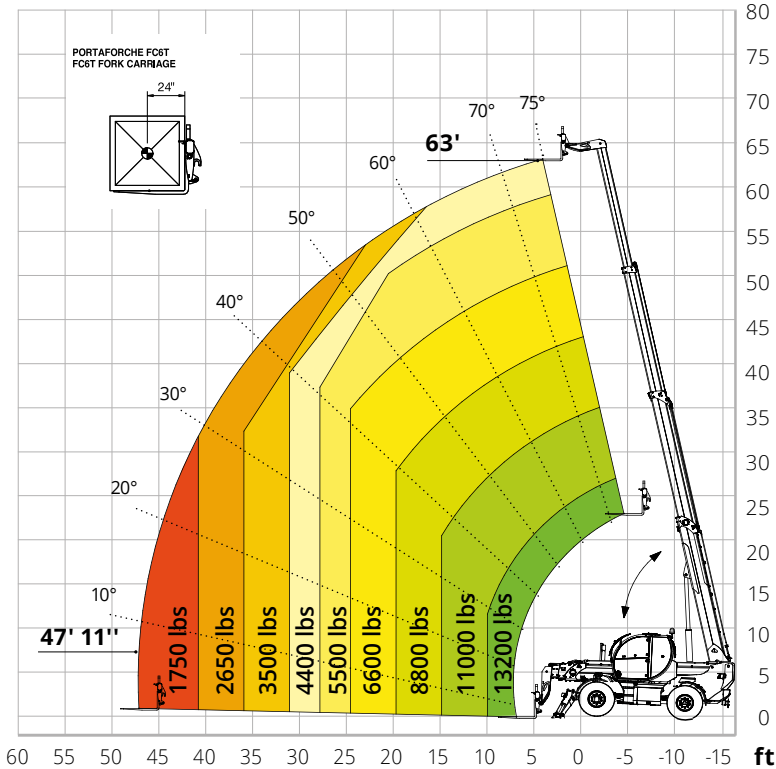


CONSTRUCTION

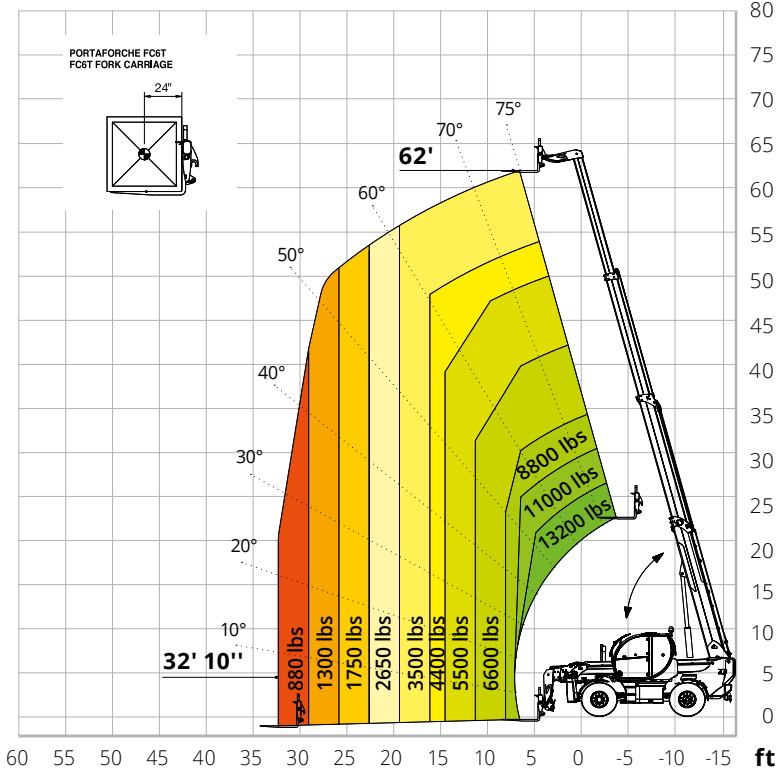


FEATURED
PROJECTS

Load chart
**on fully
 extended
 stabilizers**



Load chart
on tyres



TH 6.20

		TH 6.20	
Machine model	Telescopic handler		
	Maximum lifting capacity	13,200 lbs (center of gravity 24 in)	
	Maximum lifting height	63'	
Engine	Type	Deutz TCD 3,6 L4 Stage V	Deutz TCD 3,6 L4 Stage IIIA
	Rated power	100 kW (136 hp) @ 2,200 rpm	
	Maximum torque	500 Nm @ 1,600 rpm	
	Displacement	0.95 US gal	
	Cylinders	4 in line	
	Engine configuration	Diesel direct injection turbocharged	
	Cooling system	Water – intercooler	
Transmission	Type	Hydrostatic	
	Model	Bosch Rexroth	
	Maximum pressure	500 bar	
	Displacements	Electronically controlled variable displacement pump Variable displacement motor	
	Gear box	Dropbox, 2 speeds forward-reverse	
Axles and brakes	Type	Axles with planetary gearboxes	
	Rear axle	Oscillating and steering with hydraulic locking	
	Front axle	Oscillating and steering with levelling +/- 8°	
	Service brake	Hydraulically operated wet multi-disk brakes on each axle	
	Parking brake	Spring applied hydraulic release Multi-disk brake (S.A.H.R.)	
	Tyres dimensions	445/65 R22,5	
Performance	Max. travel speed	25 Mph	
	Drawbar pull	68 kN	
	Gradeability	47 %	
	Turning radius (end of forks)	210"	
Weights	Total unladen	32,180 lbs	
	Front axle unladen (boom retracted and lowered)	13,180 lbs	
	Rear axle unladen (boom retracted and lowered)	19,000 lbs	
Tank and system capacities	Fuel tank	40 US gal	
	AdBlue	2.6 US gal	
	Hydraulic oil tank	37 US gal	
	Engine oil tank	2.4 US gal	
	Cooling liquid	5.3 US gal	
Hydraulic circuit for movements	Max. operating system pressure	350 bar	
	Circuit type	Load sensing	
	Service pump	Danfoss / Rexroth – Variable displacement	
	Controls for boom movements	Danfoss – SIL 2 Electro-proportional valve	
	Controls for stabilizers	Bosch Rexroth – Electro-hydraulic actuators	
	Movements control	1 joystick Danfoss with FNR switch and dead man safety device - Management with CAN bus technology	
Standard met	EN 1459-1: concerning standards for variable-reach trucks EN 13000: concerning standards for mobile cranes EN 280: concerning standards for mobile elevating work platforms FOPS Level 2 / ROPS UE 2016/1628: concerning engine emissions standards		

TH 6.20

